

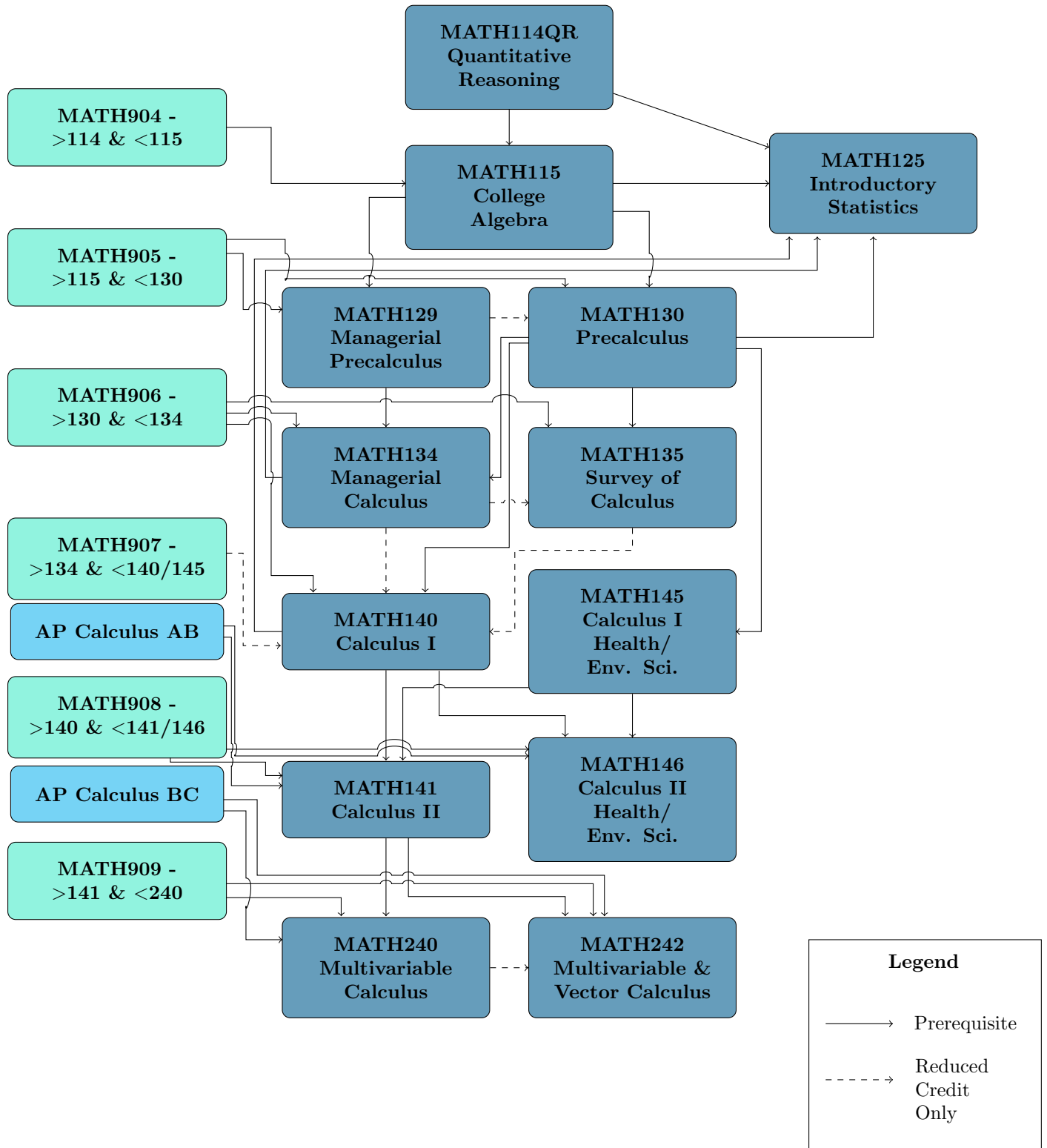
Mathematics Core Course Sequence Diagram



You must move **horizontally or top to bottom** within the UMass Boston courses to remain in sequence.
(MATH125 may be an exception depending on the prerequisite course used.)

Transfer Courses*

UMass Boston Courses



* Including advanced credits such as Advanced Placement and others as noted on the Admissions website (link)